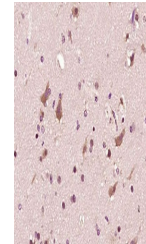


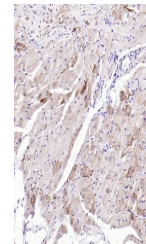
Product Datasheet

ASK1 (phospho-Ser83) antibody (orb106275)

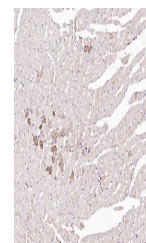
Description	ASK1 (phospho-Ser83) antibody
Species/Host	Rabbit
Reactivity	Human, Mouse, Rat
Conjugation	Unconjugated
Tested Applications	IHC-P
Immunogen	KLH conjugated Synthesised phosphopeptide derived from human ASK1 around the phosphorylation site of Ser966 (SI(p-S)LP)
Target	phospho-ASK1 (Ser966)
Preservatives	0.01M TBS(pH7.4) with 1% rAlbumin, 0.03% Proclin300 and 50% Glycerol.
Form/Appearance	Liquid
Concentration	1mg/ml
Storage	Maintain refrigerated at 2-8°C for up to 2 weeks. For long term storage store at -20°C in small aliquots to prevent freeze-thaw cycles.
Note	For research use only
Isotype	IgG
Clonality	Polyclonal
MW	152 kDa
Uniprot ID	Q99683
Dilution Range	IHC-P=1:100-500, WB=1:500-2000, IHC-F=1:100-500, ELISA=1:5000-10000
Expiration Date	12 months from date of receipt.



IHC-P analysis of Human brain glioma using...



IHC-P analysis of mouse heart using phospho...



IHC-P analysis of rat heart using phospho...