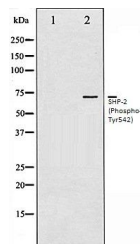


Product Datasheet

SHP-2 (Phospho-Tyr542) antibody (orb106230)

Description	Rabbit polyclonal to SHP-2 (Phospho-Tyr542). SHP-2 a SH2-containing a ubiquitously expressed tyrosin...
Species/Host	Rabbit
Reactivity	Human, Mouse, Rat
Conjugation	Unconjugated
Tested Applications	IHC-P, WB
Storage	Maintain refrigerated at 2-8°C for up to 2 weeks. For long term storage store at -20°C in small aliquots to prevent freeze-thaw cycles.
Note	For research use only
Clonality	Polyclonal
Dilution Range	WB:1:500-1:2000, IHC-P:1:50-1:200
Expiration Date	12 months from date of receipt.



Western blot analysis of A431 whole cell...