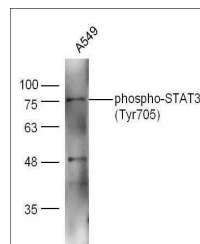


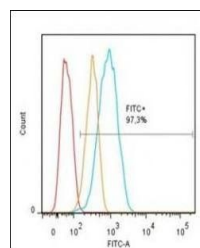
Product Datasheet

STAT3 (phospho-Tyr705) antibody (orb106147)

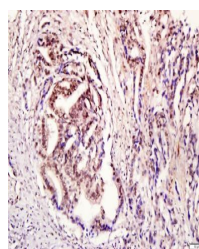
Description	STAT3 (phospho-Tyr705) antibody
Species/Host	Rabbit
Reactivity	Gallus, Human, Mouse, Rat
Conjugation	Unconjugated
Tested Applications	FC, IHC-P, WB
Immunogen	KLH conjugated Synthesised phosphopeptide derived from human STAT3 around the phosphorylation site of Tyr705 (AP(p-Y)LK)
Target	phospho-STAT3 (Tyr705)
Preservatives	0.01M TBS(pH7.4) with 1% rAlbumin, 0.03% Proclin300 and 50% Glycerol.
Form/Appearance	Liquid
Concentration	1mg/ml
Storage	Shipped at 4°C. Store at -20 °C for one year. Avoid repeated freeze/thaw cycles.
Note	For research use only
Isotype	IgG
Clonality	Polyclonal
MW	85 kDa
Uniprot ID	P40763
Dilution Range	WB=1:500-2000, IHC-P=1:100-500, Flow-Cyt=1µg /test, IHC-F=1:100-500, IF=1:100-500, ELISA=1:5000-10000
Expiration Date	12 months from date of receipt.



Western blot analysis of extracts from A...



Flow cytometric analysis of Human Melano...



Immunohistochemical staining of Human ga...