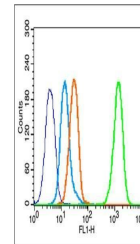


Product Datasheet

ER alpha (phospho-Tyr537) antibody (orb10613)

Description	ER alpha (phospho-Tyr537) antibody
Species/Host	Rabbit
Reactivity	Human
Conjugation	Unconjugated
Tested Applications	FC, ICC
Immunogen	KLH conjugated Synthesised phosphopeptide derived from human ER alpha around the phosphorylation site of Tyr537 (PL(p-Y)DL)
Target	Phospho-Estrogen Receptor alpha (Tyr537)
Preservatives	0.01M TBS(pH7.4) with 1% rAlbumin, 0.03% Proclin300 and 50% Glycerol.
Form/Appearance	Liquid
Concentration	1mg/ml
Storage	Shipped at 4°C. Store at -20 °C for one year. Avoid repeated freeze/thaw cycles.
Note	For research use only
Isotype	IgG
Clonality	Polyclonal
MW	66 kDa
Uniprot ID	P03372
Dilution Range	ICC=1:100, Flow-Cyt=0.2µg /test, WB=1:500-2000, IHC-P=1:100-500, IHC-F=1:100-500, IF=1:100-500, ELISA=1:5000-10000
Expiration Date	12 months from date of receipt.



Flow cytometric analysis of MCF7 cell us...