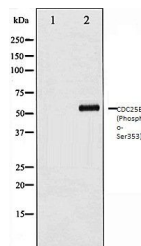


## Product Datasheet

### CDC25B (Phospho-Ser353) antibody (orb106118)

|                            |   |
|----------------------------|---|
| <b>Description</b>         | Rabbit polyclonal to CDC25B (Phospho-Ser353). CDC25B is a member of the CDC25 family of phosphatases...                                 |
| <b>Species/Host</b>        | Rabbit  |
| <b>Reactivity</b>          | Human   |
| <b>Conjugation</b>         | Unconjugated  |
| <b>Tested Applications</b> | IHC-P, WB   |
| <b>Storage</b>             | Maintain refrigerated at 2-8°C for up to 2 weeks. For long term storage store at -20°C in small aliquots to prevent freeze-thaw cycles. |
| <b>Note</b>                | For research use only   |
| <b>Clonality</b>           | Polyclonal  |
| <b>Dilution Range</b>      | WB:1:500-1:2000, IHC-P:1:50-1:200   |
| <b>Expiration Date</b>     | 12 months from date of receipt.   |



Western blot analysis of COS7 whole cell...