

---

## Product Datasheet

**Phospho-PI3 kinase p85 alpha + gamma (Tyr467 + Tyr199) antibody (orb106105)**

**Description**

Phospho-PI3 kinase p85 alpha +

**Species/Host**

Rabbit

**Reactivity**

Human, Mouse, Rat

**Conjugation**

Unconjugated

**Tested Applications**

FC, IHC-P

**Immunogen**

KLH conjugated Synthesised phosphopeptide derived from human PI3 kinase p85 alpha around the phosphorylation site of Tyr467 (RL(p-Y)EE)

**Target**

phospho-PI3 kinase p85 alpha + gamma (Tyr467 + Tyr199)

**Preservatives**

0.01M TBS(pH7.4) with 1% rAlbumin, 0.03% Proclin300 and 50% Glycerol.

**Form/Appearance**

Liquid

**Concentration**

1mg/ml

**Storage**

Shipped at 4°C. Store at -20 °C for one year. Avoid repeated freeze/thaw cycles.

**Note**

For research use only

**Isotype**

IgG

**Clonality**

Polyclonal

**MW**

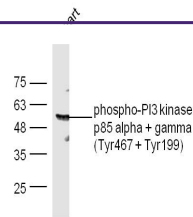
85/55 kDa

**Uniprot ID**
[P27986](#)
**Dilution Range**

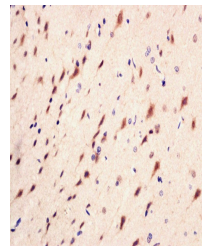
IHC-P=1:100-500, Flow-Cyt=1ug/test, WB=1:500-2000, IHC-F=1:100-500, IF=1:100-500, ELISA=1:5000-10000

**Expiration Date**

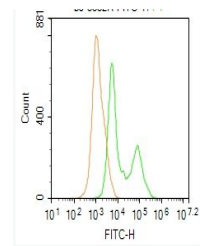
12 months from date of receipt.



WB analysis of extracts from heart using...



Immunohistochemical staining of rat brai...



Flow cytometric analysis of Molt4 cells

...