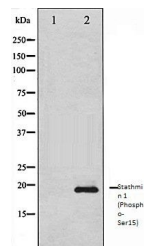


Product Datasheet

Stathmin 1 (Phospho-Ser15) antibody (orb106072)

Description	Rabbit polyclonal to Stathmin 1 (Phospho-Ser15). This gene belongs to the stathmin family of genes. ...
Species/Host	Rabbit
Reactivity	Human, Mouse, Rat
Conjugation	Unconjugated
Tested Applications	ICC, IF, IHC-P, WB
Storage	Maintain refrigerated at 2-8°C for up to 2 weeks. For long term storage store at -20°C in small aliquots to prevent freeze-thaw cycles.
Note	For research use only
Clonality	Polyclonal
Dilution Range	WB:1:500-1:2000, IHC-P:1:50-1:200, IF/ICC:1:100-1:500
Expiration Date	12 months from date of receipt.



Western blot analysis of 293 whole cell ...