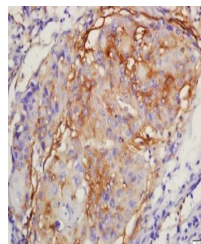


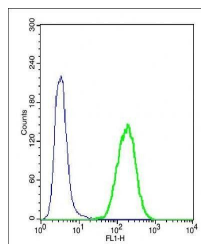
Product Datasheet

ERK1 (phospho-Thr183/185) antibody (orb10606)

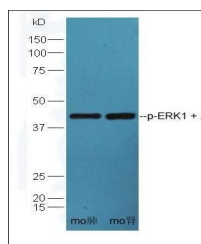
Description	ERK1 (phospho-Thr183/185) antibody
Species/Host	Rabbit
Reactivity	Human, Mouse
Conjugation	Unconjugated
Tested Applications	ICC, IF, IHC-P
Immunogen	KLH conjugated Synthesised phosphopeptide derived from mouse ERK1 around the phosphorylation site of Thr183/Tyr185 (FL(p-T)E(p-Y)V)
Target	phospho-ERK1 + 2 (Thr183/Tyr185)
Preservatives	0.01M TBS(pH7.4) with 1% rAlbumin, 0.03% Proclin300 and 50% Glycerol.
Form/Appearance	Liquid
Concentration	1mg/ml
Storage	Shipped at 4°C. Store at -20 °C for one year. Avoid repeated freeze/thaw cycles.
Note	For research use only
Isotype	IgG
Clonality	Polyclonal
MW	42/44 kDa
Uniprot ID	Q63844
Dilution Range	WB=1:500-2000, IHC-P=1:100-500, ICC=1:100, IF=1:100-500, IHC-F=1:100-500, ELISA=1:5000-10000
Expiration Date	12 months from date of receipt.



Immunohistochemical staining of human lu...



Flow cytometric analysis of unstained ce...



Western blot analysis of mouse lung tiss...