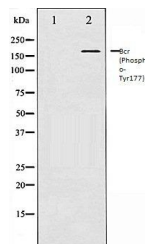


Product Datasheet

Bcr (Phospho-Tyr177) antibody (orb106043)

Description	Rabbit polyclonal to Bcr (Phospho-Tyr177). Bcr is a serine/threonine and GTPase-activating protein (...)
Species/Host	Rabbit
Reactivity	Human, Mouse
Conjugation	Unconjugated
Tested Applications	WB
Storage	Maintain refrigerated at 2-8°C for up to 2 weeks. For long term storage store at -20°C in small aliquots to prevent freeze-thaw cycles.
Note	For research use only
Clonality	Polyclonal
Dilution Range	WB:1:500-1:2000
Expiration Date	12 months from date of receipt.



Western blot analysis of K562 whole cell...