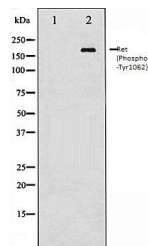


Product Datasheet

Ret (Phospho-Tyr1062) antibody (orb106012)

Description	Rabbit polyclonal to Ret (Phospho-Tyr1062). This gene, a member of the cadherin superfamily, encodes...
Species/Host	Rabbit
Reactivity	Human, Mouse, Rat
Conjugation	Unconjugated
Tested Applications	WB
Note	For research use only
Clonality	Polyclonal
Dilution Range	WB:1:500-1:2000
Expiration Date	12 months from date of receipt.



Western blot analysis of K562 whole cell...