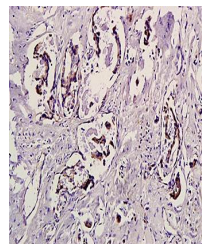


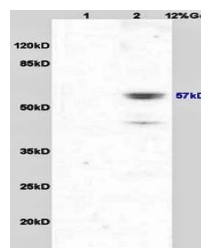
Product Datasheet

Lyn (phospho-Tyr507) antibody (orb106011)

Description	Lyn (phospho-Tyr507) antibody
Species/Host	Rabbit
Reactivity	Human, Mouse, Rat
Conjugation	Unconjugated
Tested Applications	IHC-P
Immunogen	KLH conjugated synthesised phosphopeptide derived from human Lyn around the phosphorylation site of Tyr507 (GQ(p-Y)QQ)
Target	Phospho-Lyn (Tyr507)
Preservatives	0.01M TBS(pH7.4) with 1% rAlbumin, 0.03% Proclin300 and 50% Glycerol.
Form/Appearance	Liquid
Concentration	1mg/ml
Storage	Shipped at 4°C. Store at -20 °C for one year. Avoid repeated freeze/thaw cycles.
Note	For research use only
Isotype	IgG
Clonality	Polyclonal
MW	57 kDa
Uniprot ID	P07948
Dilution Range	IHC-P=1:100-500
Expiration Date	12 months from date of receipt.



Immunohistochemical analysis of formalin...



Western blot analysis of mouse brain lys...