

---

## Product Datasheet

### EPOR antibody (orb10601)

**Description**

EPOR antibody

**Species/Host**

Rabbit

**Reactivity**

Human, Mouse, Rat

**Conjugation**

Unconjugated

**Tested Applications**

ICC, IF, IHC-P, WB

**Immunogen**

KLH conjugated synthetic peptide derived from human EPOR. Please contact us for the exact immunogen sequence. The peptide is available as orb12893.

**Target**

EPOR

**Form/Appearance**

10 mM PBS, 0.02% sodium azide

**Concentration**

- 100 µg (in 200 µl): 0.5 mg/ml- 200 µg (in 400 µl): 0.5 mg/ml

**Storage**

Maintain refrigerated at 2-8°C for up to 2 weeks. For long term storage store at -20°C in small aliquots to prevent freeze-thaw cycles.

**Note**

For research use only

**Isotype**

IgG

**Clonality**

Polyclonal

**Purity**

Polyclonal antibodies are purified by peptide affinity chromatography

**MW**

55 kDa

**Uniprot ID**

[P19235](#), [P14753](#), [Q07303](#)

**NCBI**

[000112](#), [31](#), [000121](#), [11](#)

**Entrez**

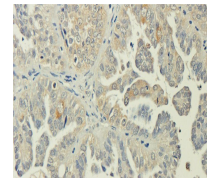
[2057](#)

**Dilution Range**

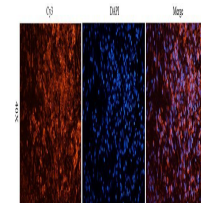
IHC-P: 1:100-500, WB: 1:200-1000, IF/ICC: 1:100-500

**Expiration Date**

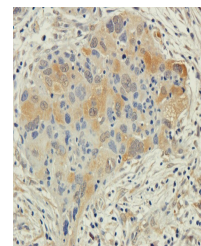
12 months from date of receipt.



Immunohistochemical staining of paraffin...



Immunofluorescence analysis of human lun...



Immunohistochemical staining of human lu...