

Product Datasheet

C-RAF (Phospho-Ser296) antibody (orb105967)

Description Rabbit polyclonal to C-RAF (Phospho-Ser296). Raf-1 is a MAP kinase kinase kinase (MAP3K) which funct...

Species/Host Rabbit

Reactivity Human, Mouse, Rat

Conjugation Unconjugated

Tested Applications IHC-P, WB

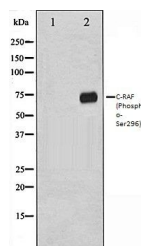
Storage Maintain refrigerated at 2-8°C for up to 2 weeks. For long term storage store at -20°C in small aliquots to prevent freeze-thaw cycles.

Note For research use only

Clonality Polyclonal

Dilution Range WB:1:500-1:2000, IHC-P:1:50-1:200

Expiration Date 12 months from date of receipt.



Western blot analysis of 293 whole cell ...