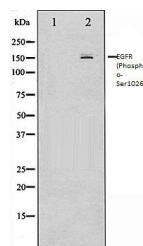


Product Datasheet

EGFR (Phospho-Ser1026) antibody (orb105960)

Description	Rabbit polyclonal to EGFR (Phospho-Ser1026). EGFR is a receptor tyrosine kinase. Receptor for epider...
Species/Host	Rabbit
Reactivity	Human, Mouse, Rat
Conjugation	Unconjugated
Tested Applications	WB
Storage	Maintain refrigerated at 2-8°C for up to 2 weeks. For long term storage store at -20°C in small aliquots to prevent freeze-thaw cycles.
Note	For research use only
Clonality	Polyclonal
Dilution Range	WB:1:500-1:2000
Expiration Date	12 months from date of receipt.



Western blot analysis of HeLa whole cell...