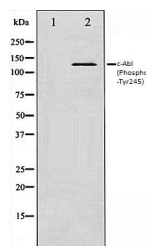


Product Datasheet

c-Abl (Phospho-Tyr245) antibody (orb105947)

Description	Rabbit polyclonal to c-Abl (Phospho-Tyr245). The ABL1 protooncogene encodes a cytoplasmic and nuclea...
Species/Host	Rabbit
Reactivity	Human, Mouse, Rat
Conjugation	Unconjugated
Tested Applications	ICC, IF, WB
Storage	Maintain refrigerated at 2-8°C for up to 2 weeks. For long term storage store at -20°C in small aliquots to prevent freeze-thaw cycles.
Note	For research use only
Clonality	Polyclonal
Dilution Range	WB:1:500-1:2000, IF/ICC:1:100-1:500
Expiration Date	12 months from date of receipt.



Western blot analysis of K562 whole cell...