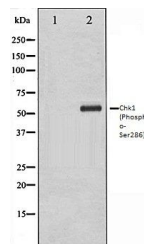


## Product Datasheet

### Chk1 (Phospho-Ser286) antibody (orb105919)

<b>Description</b>	Rabbit polyclonal to Chk1 (Phospho-Ser286). DNA damage induced protein phosphorylation; regulation O...
<b>Species/Host</b>	Rabbit
<b>Reactivity</b>	Human
<b>Conjugation</b>	Unconjugated
<b>Tested Applications</b>	ICC, IF, WB
<b>Storage</b>	Maintain refrigerated at 2-8°C for up to 2 weeks. For long term storage store at -20°C in small aliquots to prevent freeze-thaw cycles.
<b>Note</b>	For research use only
<b>Clonality</b>	Polyclonal
<b>Dilution Range</b>	WB:1:500-1:2000, IF/ICC:1:100-1:500
<b>Expiration Date</b>	12 months from date of receipt.



Western blot analysis of K562 whole cell...