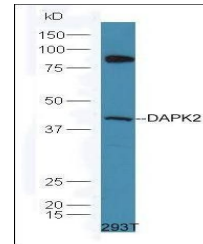


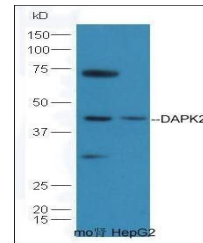
Product Datasheet

DAPK2 antibody (orb10534)

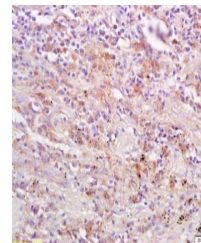
Description	DAPK2 antibody
Species/Host	Rabbit
Reactivity	Human, Mouse
Conjugation	Unconjugated
Tested Applications	WB
Immunogen	KLH conjugated synthetic peptide derived from human DAPK2 (271-370/370 aa)
Target	DAPK2
Preservatives	0.01M TBS(pH7.4) with 1% rAlbumin, 0.03% Proclin300 and 50% Glycerol.
Form/Appearance	Liquid
Concentration	1mg/ml
Storage	Shipped at 4°C. Store at -20 °C for one year. Avoid repeated freeze/thaw cycles.
Note	For research use only
Isotype	IgG
Clonality	Polyclonal
MW	41 kDa
Uniprot ID	Q9UIK4
Dilution Range	WB=1:500-2000
Expiration Date	12 months from date of receipt.



Western blot analysis of 293T cell lysat...



Western blot analysis of mouse kidney (L...



Immunohistochemical staining of human lu...