
Product Datasheet

Myeloperoxidase antibody (orb1052)

Description

Myeloperoxidase antibody

Species/Host

Rabbit

Reactivity

Human, Mouse, Rat

Conjugation

Unconjugated

Tested

ELISA, IHC-P

Applications
Immunogen

KLH conjugated synthetic peptide derived from human Myeloperoxidase. Please contact us for the exact immunogen sequence. The peptide is available as orb374920.

Target

Myeloperoxidase

Form/Appearance

10 mM PBS, 0.02% sodium azide

Concentration

- 100 µg (in 200 µl): 0.5 mg/ml- 200 µg (in 400 µl): 0.5 mg/ml

Storage

Store at 4°C for up to two weeks. For long term storage, aliquot and store at -20°C, avoid freeze/thaw cycles.

Note

For research use only

Isotype

IgG

Clonality

Polyclonal

Purity

Polyclonal antibodies are purified by peptide affinity chromatography

MW

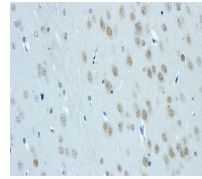
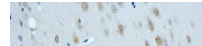
77 kDa

Uniprot ID
[P11247](#), [D3ZYH8](#), [P05164](#)
NCBI
[000250](#), [000241](#)
Entrez
[4353](#)
Dilution Range

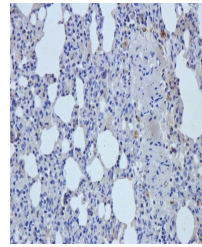
IHC-P: 1:100-200 (based on 0.5 mg/ml)

Expiration Date

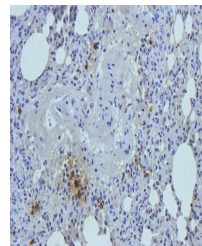
12 months from date of receipt.



IHC-P staining of rat lung tissue using ...



IHC-P image of rat lung tissue using ant...



Immunohistochemical staining of paraffin...