
Product Datasheet

Dopamine D2 receptor antibody (orb10515)

Description

Dopamine D2 receptor antibody

Species/Host

Rabbit

Reactivity

Mouse, Rat

Conjugation

Unconjugated

Tested Applications

ICC, IF, IHC-P, WB

Immunogen

KLH conjugated synthetic peptide derived from human Dopamine D2 receptor. Please contact us for the exact immunogen sequence. The peptide is available as orb12891.

Target

Dopamine D2 receptor

Form/Appearance

10 mM PBS, 0.02% sodium azide

Concentration

- 100 µg (in 200 µl): 0.5 mg/ml- 200 µg (in 400 µl): 0.5 mg/ml

Storage

Store at 4°C for up to two weeks. For long term storage, aliquot and store at -20°C, avoid freeze/thaw cycles.

Note

For research use only

Isotype

IgG

Clonality

Polyclonal

Purity

Polyclonal antibodies are purified by peptide affinity chromatography

MW

51 kDa

Uniprot ID

[P61168](#), [P14416](#), [P61169](#)

NCBI

[31](#), [000786](#), [000795](#), [11](#)

Entrez

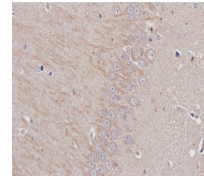
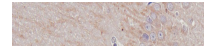
[1813](#)

Dilution Range

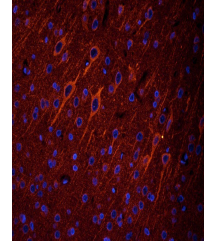
WB: 1:100-2000, IHC-P: 1:100-500, IF/ICC: 1:100-500

Expiration Date

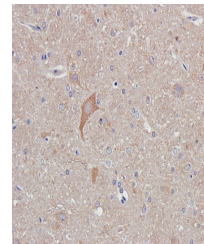
12 months from date of receipt.



Immunohistochemical staining of paraffin...



Immunofluorescence analysis of rat brain...



IHC-P staining of rat brain tissue using...