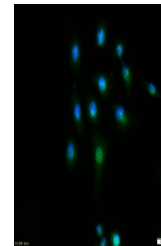


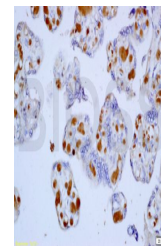
Product Datasheet

Cyclin D1 antibody (orb10496)

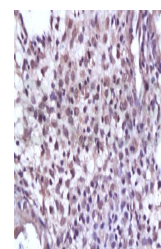
Description	Cyclin D1 antibody
Species/Host	Rabbit
Reactivity	Human, Mouse, Rat
Conjugation	Unconjugated
Tested Applications	FC, ICC, IHC-P, WB
Immunogen	KLH conjugated synthetic peptide derived from human Cyclin D1 (61-110/295 aa)
Target	Cyclin D1
Preservatives	0.01M TBS(pH7.4) with 1% rAlbumin, 0.03% Proclin300 and 50% Glycerol.
Form/Appearance	Liquid
Concentration	1mg/ml
Storage	Shipped at 4°C. Store at -20 °C for one year. Avoid repeated freeze/thaw cycles.
Note	For research use only
Isotype	IgG
Clonality	Polyclonal
MW	32 kDa
Uniprot ID	P25322
Dilution Range	WB=1:500-2000, IHC-P=1:100-500, ICC=1:100, Flow-Cyt=1µg/Test, IHC-F=1:100-500, IF=1:100-500, ELISA=1:5000-10000
Expiration Date	12 months from date of receipt.



IF analysis of MCF7 cell lysate using Cyclin D1 antibody



IHC-P image of human placenta tissue using Cyclin D1 antibody



IHC-P image of human endometrium carcinoma tissue using Cyclin D1 antibody