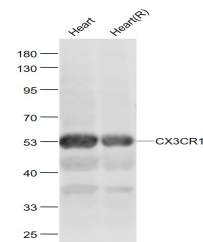


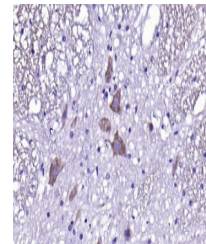
Product Datasheet

CX3CR1 antibody (orb10490)

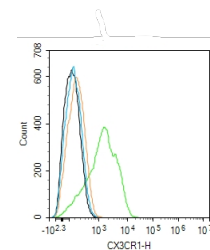
Description	CX3CR1 antibody
Species/Host	Rabbit
Reactivity	Mouse, Rat
Conjugation	Unconjugated
Tested Applications	FC, WB
Immunogen	KLH conjugated synthetic peptide derived from human CX3CR1 (151-250/355 aa)
Target	CX3CR1
Preservatives	0.01M TBS(pH7.4) with 1% rAlbumin, 0.03% Proclin300 and 50% Glycerol
Form/Appearance	Liquid
Concentration	1mg/ml
Storage	Shipped at 4°C. Store at -20 °C for one year. Avoid repeated freeze/thaw cycles
Note	For research use only
Isotype	IgG
Clonality	Polyclonal
Purity	Affinity purified by Protein A
MW	39kDa
Uniprot ID	P49238
Dilution Range	WB=1:500-2000, IHC-P=1:100-500, IHC-F=1:100-500, Flow-Cyt=1ug/Test, ELISA=1:5000-10000
Expiration Date	12 months from date of receipt.



Sample:
Heart(Mouse)
Lysate at 40 ug
Hea...



Paraformaldehyde-fixed, paraffin embedde...



Blank control:
Raw264.7. Primary
Antibod...