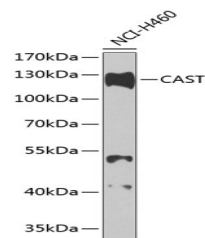


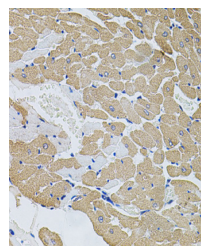
Product Datasheet

CAST antibody (orb10484)

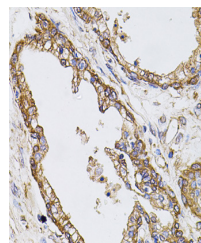
Description	Rabbit polyclonal antibody to CAST
Reactivity	Human, Mouse, Rat
Conjugation	Unconjugated
Tested Applications	IHC, WB
Immunogen	A synthetic peptide of human CAST(NP_001177371.1).
Preservatives	PBS with 0.02% sodium azide,50% glycerol,pH7.3.
Storage	Maintain refrigerated at 2-8°C for up to 2 weeks. For long term storage store at -20°C in small aliquots to prevent freeze-thaw cycles.
Note	For research use only
Isotype	IgG
Clonality	Polyclonal
MW	124kDa
Uniprot ID	P20810
Dilution Range	WB: 1:200 - 1:2000, IHC-P: 1:50 - 1:200
Expiration Date	12 months from date of receipt.



Western blot analysis of extracts of H460...



Immunohistochemistry of paraffin-embedde...



Immunohistochemistry of paraffin-embedde...