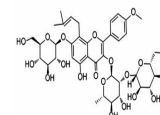


Product Datasheet

Epimedin A (orb104637)

Description	Epimedin A
Note	For research use only
Formula	C ₃₉ H ₅₀ O ₁₉
Purity	> 98%, Standard References
MW	822.8
CAS Number	[110623-72-8]
SMILES	<chem>O[C@H]1[C@H](O)[C@@H](CO)O[C@@H](OC2=CC(O)=C(C(CO[C@@H]3O[C@@H](C)[C@H](O)[C@@H](O)[C@H]3O[C@@]4([H])[C@H](O)[C@@H](O)[C@H](O)[C@@H](CO)O4)=C(C5=CC=C(OC)C=C5)O6)=O)C6=C2C/C=C(C)/C)[C@@H]1O</chem>
Expiration Date	12 months from date of receipt.



Chemical structure of Epimedin A