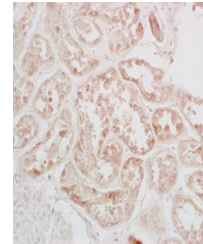


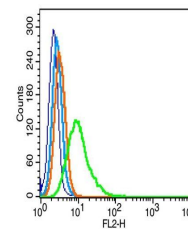
Product Datasheet

CREB1 (phospho-Ser133) antibody (orb10462)

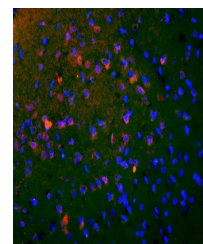
Description	CREB1 (phospho-Ser133) antibody
Species/Host	Rabbit
Reactivity	Human, Mouse, Rat
Conjugation	Unconjugated
Tested Applications	FC, IHC-P, WB
Immunogen	KLH conjugated Synthesised phosphopeptide derived from human CREB-1 around the phosphorylation site of Ser133 (RP(p-S)YR)
Target	phospho-CREB-1 (Ser133)
Preservatives	0.01M TBS(pH7.4) with 1% rAlbumin, 0.03% Proclin300 and 50% Glycerol.
Form/Appearance	Liquid
Concentration	1mg/ml
Storage	Shipped at 4°C. Store at -20 °C for one year. Avoid repeated freeze/thaw cycles.
Note	For research use only
Isotype	IgG
Clonality	Polyclonal
MW	37 kDa
Uniprot ID	P16220
Dilution Range	WB=1:500-2000, IHC-P=1:100-500, Flow-Cyt=1µg/Test, IHC-F=1:100-500, IF=1:100-500, ELISA=1:5000-10000
Expiration Date	12 months from date of receipt.



Immunohistochemical staining of human ki...



Flow cytometric analysis of RSC96(blue) ...



Immunohistochemical analysis of formalin...