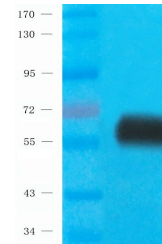


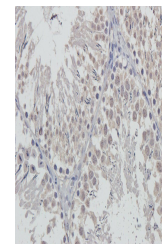
Product Datasheet

Cox2 antibody (orb10450)

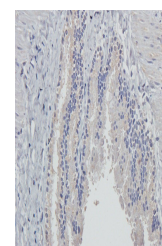
Description	Cox2 antibody
Species/Host	Rabbit
Reactivity	Human, Mouse, Rat
Conjugation	Unconjugated
Tested Applications	ELISA, IHC-P, WB
Immunogen	KLH conjugated synthetic peptide derived from human Cox2. Please contact us for the exact immunogen sequence. The peptide is available as orb393923.
Target	Cox2
Form/Appearance	10 mM PBS, 0.02% sodium azide
Concentration	- 100 µg (in 200 µl): 0.5 mg/ml- 200 µg (in 400 µl): 0.5 mg/ml
Storage	Store at 4°C for up to two weeks. For long term storage, aliquot and store at -20°C, avoid freeze/thaw cycles.
Note	For research use only
Isotype	IgG
Clonality	Polyclonal
Purity	Polyclonal antibodies are purified by peptide affinity chromatography
MW	66 kDa
Dilution Range	P-ELISA:1:500-1000, WB:1:100-500, IHC-P:1:100-500 (based on 0.5 mg/ml)
Expiration Date	12 months from date of receipt.



WB analysis of human lung cancer tissue ...



IHC-P image of rat testis tissue using a...



IHC-P staining of rat lung tissue using ...