
Product Datasheet

Claudin 1 antibody (orb10447)

Description

Claudin 1 antibody

Species/Host

Rabbit

Reactivity

Human, Mouse, Porcine, Rat

Conjugation

Unconjugated

Tested

ELISA, IHC-P, WB

Applications
Immunogen

KLH conjugated synthetic peptide derived from human Claudin 1. Please contact us for the exact immunogen sequence. The peptide is available as orb374718.

Target

Claudin 1

Form/Appearance

10 mM PBS, 0.02% sodium azide

Concentration

- 100 µg (in 200 µl): 0.5 mg/ml- 200 µg (in 400 µl): 0.5 mg/ml

Storage

Store at 4°C for up to two weeks. For long term storage, aliquot and store at -20°C, avoid freeze/thaw cycles.

Note

For research use only

Isotype

IgG

Clonality

Polyclonal

Purity

Polyclonal antibodies are purified by peptide affinity chromatography

MW

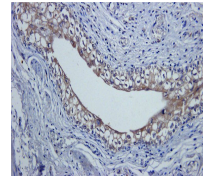
23 kDa

Uniprot ID
[O88551](#), [O95832](#), [P56745](#)
Entrez
[9076](#)
Dilution Range

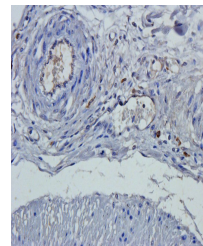
IHC-P: 1:100-500, WB: 1:100-500 (based on 0.5mg/ml)

Expiration Date

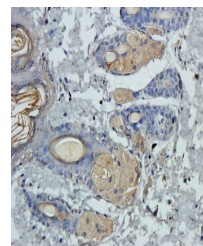
12 months from date of receipt.



IHC-P image of pig uterus tissue using a...



Immunohistochemical staining of pig uterus...



IHC-P staining of rat skin tissue using ...