

Product Datasheet

Collagen X antibody (orb10444)

Description

Collagen X antibody

Species/Host

Rabbit

Reactivity

Bovine, Canine, Gallus, Human, Mouse, Rat

Conjugation

Unconjugated

Tested

ELISA, IHC-P, WB

Applications
Immunogen

KLH conjugated synthetic peptide derived from human Collagen X. Please contact us for the exact immunogen sequence. The peptide is available as orb374717.

Target

Collagen X

Form/Appearance

10 mM PBS, 0.02% sodium azide

Concentration

- 100 µg (in 200 µl): 0.5 mg/ml- 200 µg (in 400 µl): 0.5 mg/ml

Storage

Store at 4°C for up to two weeks. For long term storage, aliquot and store at -20°C, avoid freeze/thaw cycles.

Note

For research use only

Isotype

IgG

Clonality

Polyclonal

Purity

Polyclonal antibodies are purified by peptide affinity chromatography

MW

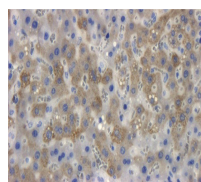
66 kDa

Uniprot ID
[Q05306](#), [Q03692](#)
NCBI
[000493](#), [000484](#)
Entrez
[1300](#)
Dilution Range

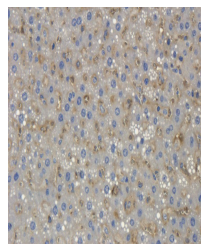
IHC-P: 1:300-500, WB: 1:200-2000

Expiration Date

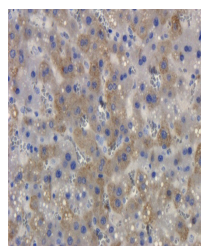
12 months from date of receipt.



IHC-P staining of rat liver tissue using...



Immunohistochemical staining of rat live...



IHC-P staining of rat liver tissue using...