
Product Datasheet

COL2A1 antibody (orb10436)

Description

COL2A1 antibody

Species/Host

Rabbit

Reactivity

Human, Mouse, Rat

Conjugation

Unconjugated

Tested

ELISA, ICC, IF, IHC-P, WB

Applications
Immunogen

KLH conjugated synthetic peptide derived from human COL2A1. Please contact us for the exact immunogen sequence. The peptide is available as orb374716.

Target

COL2A1

Form/Appearance

10 mM PBS, 0.02% sodium azide

Concentration

- 100 µg (in 200 µl): 0.5 mg/ml- 200 µg (in 400 µl): 0.5 mg/ml

Storage

Store at 4°C for up to two weeks. For long term storage, aliquot and store at -20°C, avoid freeze/thaw cycles.

Note

For research use only

Application notes

A customer has successfully used this antibody in IHC

Isotype

IgG

Clonality

Polyclonal

Purity

Polyclonal antibodies are purified by peptide affinity chromatography

MW

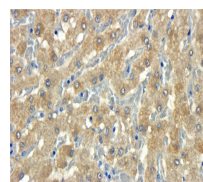
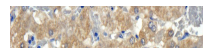
117 kDa

Uniprot ID
[P02458](#), [P05539](#), [P28481](#)
NCBI
[31](#), [001844](#), [41](#), [001835](#)
Entrez
[1280](#)
Dilution Range

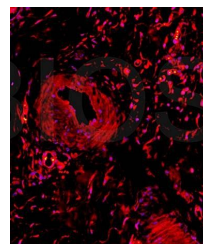
WB:1:200, IF/ICC: 1:300, IHC-P:1:300 (based on 0.5 mg/ml)

Expiration Date

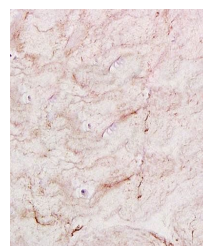
12 months from date of receipt.



IHC-P staining of pig liver tissue using...



IF analysis of rabbit meniscus tissue us...



Immunohistochemical analysis of formalin...