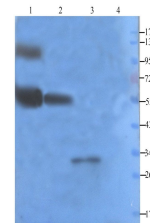


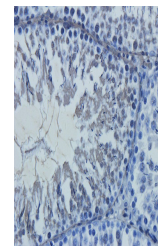
Product Datasheet

Claudin 5 antibody (orb10416)

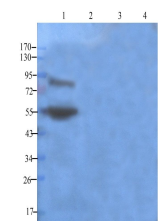
Description	Claudin 5 antibody
Species/Host	Rabbit
Reactivity	Human, Mouse, Rat
Conjugation	Unconjugated
Tested Applications	ELISA, IHC-P, WB
Immunogen	KLH conjugated synthetic peptide derived from human Claudin 5. Please contact us for the exact immunogen sequence. The peptide is available as orb374796.
Target	Claudin 5
Form/Appearance	10 mM PBS, 0.02% sodium azide
Concentration	- 100 µg (in 200 µl): 0.5 mg/ml- 200 µg (in 400 µl): 0.5 mg/ml
Storage	Store at 4°C for up to two weeks. For long term storage, aliquot and store at -20°C, avoid freeze/thaw cycles.
Note	For research use only
Isotype	IgG
Clonality	Polyclonal
Purity	Polyclonal antibodies are purified by peptide affinity chromatography
MW	23 kDa
Uniprot ID	O54942 , O00501
NCBI	066924 , 021101
Entrez	7122
Dilution Range	WB: 1:100-1000, IHC-P: 1:50-300 (based on 0.5 mg/ml)
Expiration Date	12 months from date of receipt.



Western blot analysis of human breast tu...



rat lung (lane 4) using Claudin 5 antibo...



IHC-P image of rat testis tissue using a...