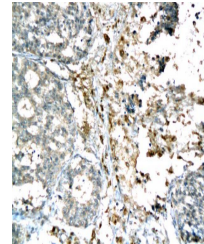


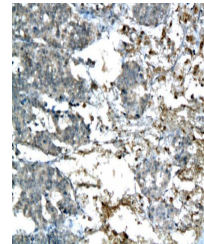
Product Datasheet

Cytokeratin 19 antibody (orb10404)

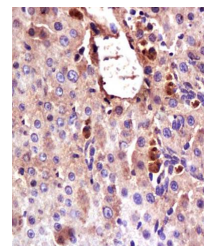
Description	Cytokeratin 19 antibody
Species/Host	Rabbit
Reactivity	Human
Conjugation	Unconjugated
Tested Applications	FC
Immunogen	KLH conjugated synthetic peptide derived from human CK19 (168-270/400 aa)
Target	Cytokeratin 19
Preservatives	0.01M TBS(pH7.4) with 1% rAlbumin, 0.03% Proclin300 and 50% Glycerol.
Form/Appearance	Liquid
Concentration	1mg/ml
Storage	Shipped at 4°C. Store at -20 °C for one year. Avoid repeated freeze/thaw cycles.
Note	For research use only
Isotype	IgG
Clonality	Polyclonal
MW	44 kDa
Uniprot ID	P08727
Dilution Range	Flow-Cyt=1ug/Test, WB=1:500-2000, ELISA=1:5000-10000
Expiration Date	12 months from date of receipt.



Immunohistochemical analysis of paraffin...



IHC-P of human breast adenocarcinoma tis...



Immunohistochemical analysis of formalin...