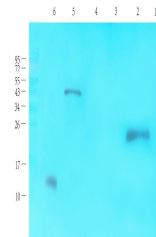


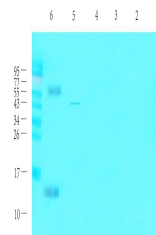
Product Datasheet

CGRP antibody (orb10379)

Description	CGRP antibody
Species/Host	Rabbit
Reactivity	Human, Mouse, Rat
Conjugation	Unconjugated
Tested Applications	ELISA, WB
Immunogen	KLH conjugated synthetic peptide derived from human CGRP. Please contact us for the exact immunogen sequence. The peptide is available as orb12887.
Target	CGRP
Form/Appearance	10 mM PBS, 0.02% sodium azide
Concentration	- 100 µg (in 200 µl): 0.5 mg/ml- 200 µg (in 400 µl): 0.5 mg/ml
Storage	Store at 4°C for up to two weeks. For long term storage, aliquot and store at -20°C, avoid freeze/thaw cycles.
Note	For research use only
Isotype	IgG
Clonality	Polyclonal
Purity	Polyclonal antibodies are purified by peptide affinity chromatography
MW	15 kDa
Uniprot ID	P06881, P01256
Dilution Range	WB: 1:200-1500
Expiration Date	12 months from date of receipt.



WB analysis of rat thyroid (lane 1), rat...



Western blot analysis of rat thyroid (la...