

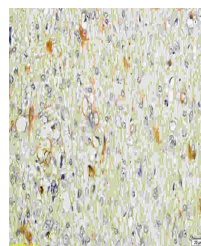
Product Datasheet

CGP39 antibody (orb10365)

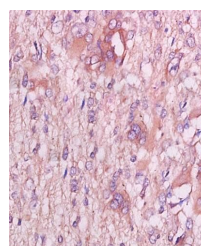
Description	CGP39 antibody
Species/Host	Rabbit
Reactivity	Human, Mouse, Rat
Conjugation	Unconjugated
Tested Applications	ICC, WB
Immunogen	KLH conjugated synthetic peptide derived from rat CHI3L1 (330-381/381 aa)
Target	CHI3L1
Preservatives	0.01M TBS(pH7.4) with 1% rAlbumin, 0.03% Proclin300 and 50% Glycerol.
Form/Appearance	Liquid
Concentration	1mg/ml
Storage	Shipped at 4°C. Store at -20 °C for one year. Avoid repeated freeze/thaw cycles.
Note	For research use only
Isotype	IgG
Clonality	Polyclonal
MW	42 kDa
Uniprot ID	Q9WTV1
Dilution Range	WB=1:500-2000, ICC=1:100, IHC-P=1:100-500, IHC-F=1:100-500
Expiration Date	12 months from date of receipt.



Immunohistochemical analysis of paraffin...



IHC-P of human endometrial cancer using ...



Immunohistochemical analysis of formalin...