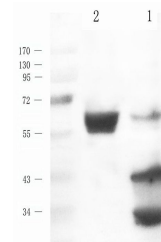


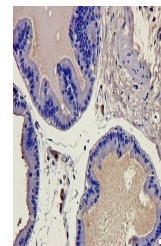
## Product Datasheet

### CD86 antibody (orb10351)

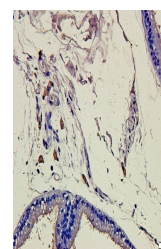
<b>Description</b>	CD86 antibody
<b>Species/Host</b>	Rabbit
<b>Reactivity</b>	Guinea pig, Mouse, Rat
<b>Conjugation</b>	Unconjugated
<b>Tested Applications</b>	IHC-P, WB
<b>Immunogen</b>	KLH conjugated synthetic peptide derived from human CD86. Please contact us for the exact immunogen sequence. The peptide is available as orb12886.
<b>Target</b>	CD86
<b>Form/Appearance</b>	10 mM PBS, 0.02% sodium azide
<b>Concentration</b>	- 100 µg (in 200 µl): 0.5 mg/ml
<b>Storage</b>	Maintain refrigerated at 2-8°C for up to 2 weeks. For long term storage store at -20°C in small aliquots to prevent freeze-thaw cycles.
<b>Note</b>	For research use only
<b>Isotype</b>	IgG
<b>Clonality</b>	Polyclonal
<b>Purity</b>	Polyclonal antibodies are purified by peptide affinity chromatography
<b>MW</b>	38 kDa
<b>Uniprot ID</b>	<a href="#">O35531</a> , <a href="#">P42081</a> , <a href="#">P42082</a>
<b>NCBI</b>	<a href="#">001206924</a> , <a href="#">001193853</a>
<b>Entrez</b>	<a href="#">942</a>
<b>Dilution Range</b>	IHC-P: 1:100-500, WB: 1:100-800
<b>Expiration Date</b>	12 months from date of receipt.



Western blot analysis of mouse retina (l...



IHC-P image of rat prostate tissue using...



IHC-P staining of rat prostate tissue us...