

Product Datasheet

CD68 antibody (orb10343)

Description

CD68 antibody

Species/Host

Rabbit

Reactivity

Human, Mouse, Rat

Conjugation

Unconjugated

Tested Applications

IHC-P, WB

Immunogen

KLH conjugated synthetic peptide derived from human CD68. Please contact us for the exact immunogen sequence. The peptide is available as orb374715.

Target

CD68

Form/Appearance

10 mM PBS, 0.02% sodium azide

Concentration

- 100 µg (in 200 µl): 0.5 mg/ml- 200 µg (in 400 µl): 0.5 mg/ml

Storage

Store at 4°C for up to two weeks. For long term storage, aliquot and store at -20°C, avoid freeze/thaw cycles.

Note

For research use only

Isotype

IgG

Clonality

Polyclonal

Purity

Polyclonal antibodies are purified by peptide affinity chromatography

MW

37 kDa

Uniprot ID

[Q4FZY1](#), [P31996](#)

NCBI

[11](#), [033983](#), [009853](#)

Entrez

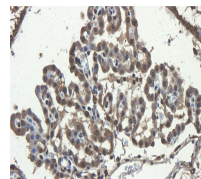
[12514](#)

Dilution Range

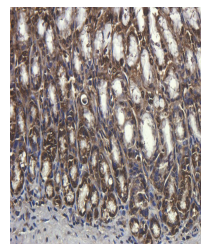
WB:1:100-2000, IHC-P:1:100-1000 (based on 0.5 mg/ml)

Expiration Date

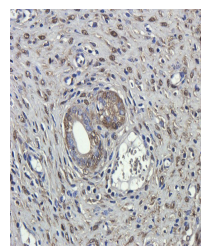
12 months from date of receipt.



Immunohistochemical staining of paraffin...



IHC-P staining of rat stomach tissue usi...



Immunohistochemical staining of paraffin...