
Product Datasheet

CD8 antibody (orb10325)

Description

CD8 antibody

Species/Host

Rabbit

Conjugation

Unconjugated

Tested Applications

ELISA, IHC-P, WB

Immunogen

KLH conjugated synthetic peptide derived from human CD8. Please contact us for the exact immunogen sequence. The peptide is available as orb374713.

Target

CD8

Form/Appearance

10 mM PBS, 0.02% sodium azide

Concentration

- 100 µg (in 200 µl): 0.5 mg/ml- 200 µg (in 400 µl): 0.5 mg/ml

Storage

Store at 4°C for up to two weeks. For long term storage, aliquot and store at -20°C, avoid freeze/thaw cycles.

Note

For research use only

Application notes

 This antibody is available without BSA and NaN₃, please contact us for details

Isotype

IgG

Clonality

Polyclonal

Purity

Polyclonal antibodies are purified by peptide affinity chromatography

MW

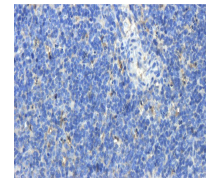
26 kDa

Uniprot ID
[P10300](#), [P01732](#), [P05541](#)
NCBI
[21](#), [001081110](#), [001074579](#), [11](#)
Entrez
[12525](#)
Dilution Range

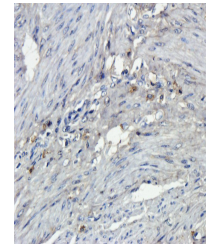
WB: 1:200-800, IHC-P: 1:100-300 (based on 0.5 mg/ml)

Expiration Date

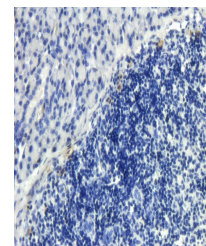
12 months from date of receipt.



Immunohistochemical staining of paraffin...



Immunohistochemical staining of human en...



IHC-P image of rat spleen tissue using a...