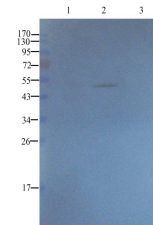


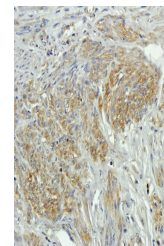
Product Datasheet

CD20 antibody (orb10307)

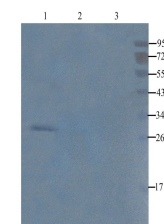
Description	CD20 antibody
Species/Host	Rabbit
Conjugation	Unconjugated
Tested Applications	ELISA, IHC-P, WB
Immunogen	KLH conjugated synthetic peptide derived from human CD20. Please contact us for the exact immunogen sequence. The peptide is available as orb374711.
Target	CD20
Form/Appearance	10 mM PBS, 0.02% sodium azide
Concentration	- 100 µg (in 200 µl): 0.5 mg/ml- 200 µg (in 400 µl): 0.5 mg/ml
Storage	Store at 4°C for up to two weeks. For long term storage, aliquot and store at -20°C, avoid freeze/thaw cycles.
Note	For research use only
Isotype	IgG
Clonality	Polyclonal
Purity	Polyclonal antibodies are purified by peptide affinity chromatography
MW	33 kDa
Uniprot ID	P19437 , P11836
NCBI	21 , 31 , 021950 , 068769
Entrez	931
Dilution Range	WB: 1:100-500, IHC-P: 1:100-800 (based on 0.5 mg/ml)
Expiration Date	12 months from date of receipt.



Western blot analysis of human thyroid t...



IHC-P image of human endometrial cancer ...



WB analysis of mouse lymph node (lane 1)...