
Product Datasheet

CD19 antibody (orb10306)

Description

CD19 antibody

Species/Host

Rabbit

Reactivity

Human, Mouse, Rat

Conjugation

Unconjugated

Tested

ELISA, ICC, IF, IHC-P, WB

Applications
Immunogen

KLH conjugated synthetic peptide derived from human CD19. Please contact us for the exact immunogen sequence. The peptide is available as orb374859.

Target

CD19

Form/Appearance

10 mM PBS, 0.02% sodium azide

Concentration

- 100 µg (in 200 µl): 0.5 mg/ml- 200 µg (in 400 µl): 0.5 mg/ml

Storage

Store at 4°C for up to two weeks. For long term storage, aliquot and store at -20°C, avoid freeze/thaw cycles.

Note

For research use only

Isotype

IgG

Clonality

Polyclonal

Purity

Polyclonal antibodies are purified by peptide affinity chromatography

MW

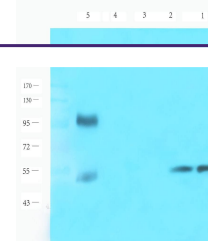
128 kDa

Uniprot ID
[P15391](#)
NCBI
[NM_001770.5](#), [NP_001761.3](#), [NM_001770.51](#), [NP_001761.31](#)
Entrez
[930](#)
Dilution Range

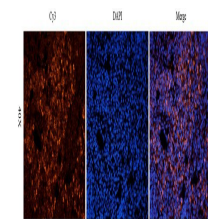
WB: 1:200-2000, IF/ICC: 1:50-300, IHC-P: 1:100-500 (based on 0.5 mg/ml)

Expiration Date

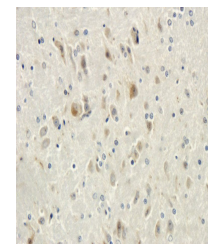
12 months from date of receipt.



Western blot analysis of rat lymph node ...



Immunofluorescence analysis of rat lymph...



IHC-P staining of rat brain tissue using...