
Product Datasheet

CD14 antibody (orb10294)

Description

CD14 antibody

Species/Host

Rabbit

Conjugation

Unconjugated

Tested Applications

ELISA, IHC-P, WB

Immunogen

KLH conjugated synthetic peptide derived from human CD14. Please contact us for the exact immunogen sequence. The peptide is available as orb374708.

Target

CD14. CD14 antibody detects endogenous levels of total CD14

Form/Appearance

10 mM PBS, 0.02% sodium azide

Concentration

- 100 µg (in 200 µl): 0.5 mg/ml- 200 µg (in 400 µl): 0.5 mg/ml

Storage

Store at 4°C for up to two weeks. For long term storage, aliquot and store at -20°C, avoid freeze/thaw cycles.

Note

For research use only

Isotype

IgG

Clonality

Polyclonal

Purity

Polyclonal antibodies are purified by peptide affinity chromatography

MW

40 kDa

Uniprot ID

[Q63691](#), [P10810](#), [P08571](#)

NCBI

[000582](#), [000591](#)

Entrez

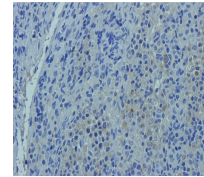
[929](#)

Dilution Range

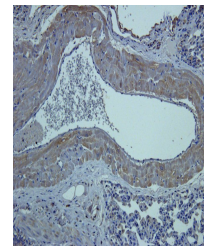
IHC-P: 1:100-500, WB: 1:100-2000

Expiration Date

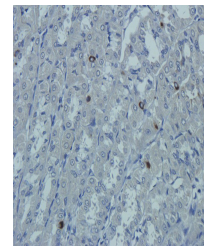
12 months from date of receipt.



IHC-P image of rat lymph node tissue using CD14 antibody.



IHC-P staining of rat lung tissue using CD14 antibody.



Immunohistochemical staining of paraffin-embedded tissue using CD14 antibody.