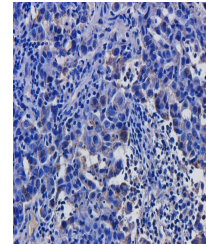


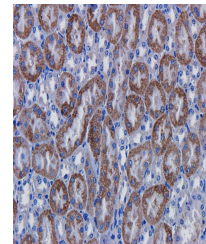
Product Datasheet

CD146 antibody (orb10290)

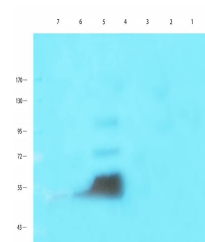
Description	CD146 antibody
Species/Host	Rabbit
Reactivity	Human, Mouse, Rat
Conjugation	Unconjugated
Tested Applications	ICC, IF, IHC-P, WB
Immunogen	KLH conjugated synthetic peptide derived from human CD146. Please contact us for the exact immunogen sequence. The peptide is available as orb12884.
Target	CD146
Form/Appearance	10 mM PBS, 0.02% sodium azide
Concentration	- 100 µg (in 200 µl): 0.5 mg/ml- 200 µg (in 400 µl): 0.5 mg/ml
Storage	Store at 4°C for up to two weeks. For long term storage, aliquot and store at -20°C, avoid freeze/thaw cycles.
Note	For research use only
Isotype	IgG
Clonality	Polyclonal
Purity	Polyclonal antibodies are purified by peptide affinity chromatography
MW	72 kDa
Uniprot ID	Q8R2Y2 , Q9EPF2 , P43121
Entrez	4162
Dilution Range	IF/ICC: 1:100-600, IHC-P: 1:100-600, WB: 1:200-1000
Expiration Date	12 months from date of receipt.



Immunohistochemical staining of human br...



Immunohistochemical staining of mouse ki...



Western blot analysis of mouse brain (la...