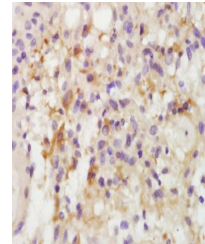


Product Datasheet

c-Kit (phospho-Tyr936) antibody (orb10287)

Description	c-Kit (phospho-Tyr936) antibody
Species/Host	Rabbit
Reactivity	Human
Conjugation	Unconjugated
Tested Applications	FC, IHC-P
Immunogen	KLH conjugated Synthesised phosphopeptide derived from human c-kit around the phosphorylation site of Tyr936 (HI(p-Y)SN)
Target	phospho-c-kit (Tyr936)
Preservatives	0.01M TBS(pH7.4) with 1% rAlbumin, 0.03% Proclin300 and 50% Glycerol.
Form/Appearance	Liquid
Concentration	1mg/ml
Storage	Shipped at 4°C. Store at -20 °C for one year. Avoid repeated freeze/thaw cycles.
Note	For research use only
Isotype	IgG
Clonality	Polyclonal
MW	107 kDa
Uniprot ID	P10721
Dilution Range	IHC-P=1:100-500, Flow-Cyt=1µg /test, IHC-F=1:100-500, IF=1:100-500, ELISA=1:5000-10000
Expiration Date	12 months from date of receipt.



Immunohistochemical analysis of formalin...