
Product Datasheet

c-Kit antibody (orb10286)

Description

c-Kit antibody

Species/Host

Rabbit

Reactivity

Human, Mouse, Rat

Conjugation

Unconjugated

Tested Applications

IHC-P, WB

Immunogen

KLH conjugated synthetic peptide derived from human c-Kit. Please contact us for the exact immunogen sequence. The peptide is available as orb374707.

Target

c-Kit

Form/Appearance

10 mM PBS, 0.02% sodium azide

Concentration

- 100 µg (in 200 µl): 0.5 mg/ml- 200 µg (in 400 µl): 0.5 mg/ml

Storage

Store at 4°C for up to two weeks. For long term storage, aliquot and store at -20°C, avoid freeze/thaw cycles.

Note

For research use only

Isotype

IgG

Clonality

Polyclonal

Purity

Polyclonal antibodies are purified by peptide affinity chromatography

MW

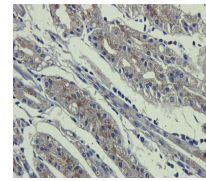
110 kDa

Uniprot ID
[P10721](#), [P05532](#)
NCBI
[21](#), [000213](#), [000222](#), [11](#)
Entrez
[3815](#)
Dilution Range

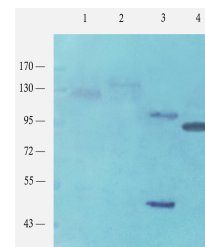
WB:1:200-1000, IHC-P:1:100-500 (based on 0.5 mg/ml)

Expiration Date

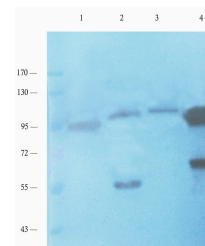
12 months from date of receipt.



Immunohistochemical staining of human st...



Western blot analysis of rat colon (lane...



WB analysis of rat colon (lane 1), mouse...