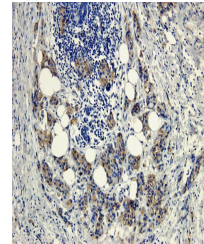


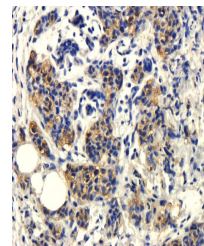
Product Datasheet

CD105 antibody (orb10285)

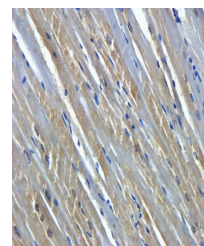
Description	CD105 antibody
Species/Host	Rabbit
Conjugation	Unconjugated
Tested Applications	ELISA, IHC-P, WB
Immunogen	KLH conjugated synthetic peptide derived from human CD105. Please contact us for the exact immunogen sequence. The peptide is available as orb374706.
Target	CD105
Form/Appearance	10 mM PBS, 0.02% sodium azide
Concentration	- 100 µg (in 200 µl): 0.5 mg/ml- 200 µg (in 400 µl): 0.5 mg/ml
Storage	Store at 4°C for up to two weeks. For long term storage, aliquot and store at -20°C, avoid freeze/thaw cycles.
Note	For research use only
Isotype	IgG
Clonality	Polyclonal
Purity	Affinity purified
MW	70 kDa
Uniprot ID	P17813 , P37176 , Q63961
NCBI	000118 , 31 , 000109 , 11
Entrez	2022
Dilution Range	WB: 1:100-600, IHC-P: 1:200 (based on 0.5mg/ml)
Expiration Date	12 months from date of receipt.



IHC-P staining of human breast cancer ti...



IHC-P image of human breast cancer tissu...



Immunohistochemical staining of pig hear...