
Product Datasheet

Cathepsin G antibody (orb10253)

Description

Cathepsin G antibody

Species/Host

Rabbit

Reactivity

Human, Mouse, Rat

Conjugation

Unconjugated

Tested

IHC-P, WB

Applications
Immunogen

KLH conjugated synthetic peptide derived from human Cathepsin G. Please contact us for the exact immunogen sequence. The peptide is available as orb371969.

Target

Cathepsin G

Form/Appearance

10 mM PBS, 0.02% sodium azide

Concentration

- 100 µg (in 200 µl): 0.5 mg/ml- 200 µg (in 400 µl): 0.5 mg/ml

Storage

Store at 4°C for up to two weeks. For long term storage, aliquot and store at -20°C, avoid freeze/thaw cycles.

Note

For research use only

Isotype

IgG

Clonality

Polyclonal

Purity

Polyclonal antibodies are purified by peptide affinity chromatography

MW

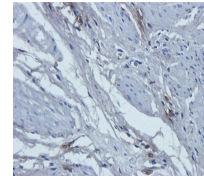
29 kDa

Uniprot ID
[P08311](#)
Entrez
[1511](#)
Dilution Range

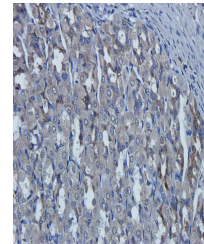
WB: 1:100-1000, IHC-P: 1:100-500 (based on 0.5 mg/ml)

Expiration Date

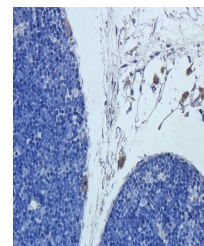
12 months from date of receipt.



IHC-P staining of rat stomach tissue usi...



IHC-P image of rat stomach tissue using



Immunohistochemical staining of rat thym...