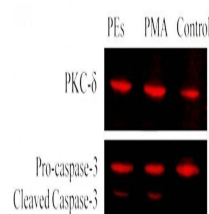


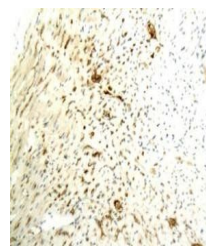
Product Datasheet

Caspase 3 antibody (orb10237)

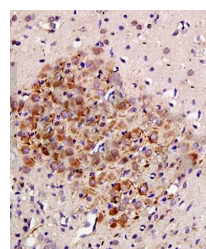
Description	Caspase 3 antibody
Species/Host	Rabbit
Reactivity	Human, Mouse, Rat
Conjugation	Unconjugated
Tested Applications	IHC-P, WB
Immunogen	KLH conjugated synthetic peptide derived from human caspase-3 p17 subunit (80-175/277 aa)
Target	Caspase-3
Preservatives	0.01M TBS(pH7.4) with 1% rAlbumin, 0.03% Proclin300 and 50% Glycerol.
Form/Appearance	Liquid
Concentration	1mg/ml
Storage	Maintain refrigerated at 2-8°C for up to 2 weeks. For long term storage store at -20°C in small aliquots to prevent freeze-thaw cycles.
Note	For research use only
Isotype	IgG
Clonality	Polyclonal
MW	17/32 kDa
Uniprot ID	P42574
Dilution Range	WB=1:500-2000, IHC-P=1:100-500
Expiration Date	12 months from date of receipt.



Western blot analyses for PKC-δ, Caspas...



Immunohistochemical analysis of paraffin...



Paraffin-embedded rat brain tissue fixed...