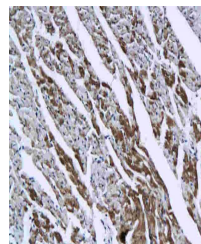


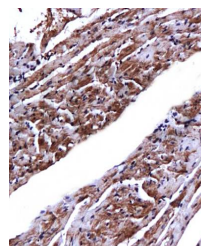
Product Datasheet

Cardiac troponin I antibody (orb10226)

Description	Cardiac troponin I antibody
Species/Host	Rabbit
Reactivity	Mouse
Conjugation	Unconjugated
Tested Applications	IHC-P
Immunogen	KLH conjugated synthetic peptide derived from human CTn1 (131-210/210 aa)
Target	Cardiac Troponin I/TNNC1
Preservatives	0.01M TBS(pH7.4) with 1% rAlbumin, 0.03% Proclin300 and 50% Glycerol.
Form/Appearance	Liquid
Concentration	1mg/ml
Storage	Shipped at 4°C. Store at -20 °C for one year. Avoid repeated freeze/thaw cycles.
Note	For research use only
Isotype	IgG
Clonality	Polyclonal
MW	23 kDa
Uniprot ID	P19429
Dilution Range	IHC-P=1:100-500
Expiration Date	12 months from date of receipt.



IHC-P of mouse myocardium using Cardiac ...



Immunohistochemical analysis of formalin...