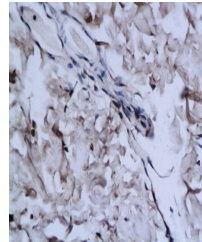


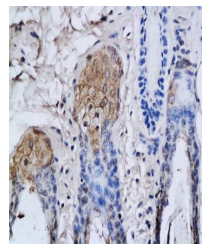
Product Datasheet

CAMK2A + CAMK2B + CAMK2D antibody (orb10224)

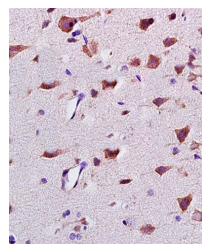
Description	CaMK2b antibody
Species/Host	Rabbit
Reactivity	Human, Mouse, Rat
Conjugation	Unconjugated
Tested Applications	IHC, WB
Immunogen	KLH conjugated synthetic peptide derived from human CaMK2 beta/ gamma/ delta (1-100/479 aa)
Target	CAMK2A + CAMK2B + CAMK2D
Preservatives	0.01M TBS(pH7.4) with 1% rAlbumin, 0.03% Proclin300 and 50% Glycerol.
Form/Appearance	Liquid
Concentration	1mg/ml
Storage	Shipped at 4°C. Store at -20 °C for one year. Avoid repeated freeze/thaw cycles.
Note	For research use only
Isotype	IgG
Clonality	Polyclonal
MW	53-73 kDa
Uniprot ID	Q9UQM7
Dilution Range	WB=1:500-2000, IHC-P=1:100-500
Expiration Date	12 months from date of receipt.



IHC-P of guinea pig skin (CaMK2b antibody)



Immunohistochemical analysis of paraffin-embedded tissue



IHC-P of rat skin tissue (CaMK2b antibody)