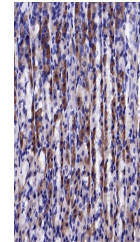


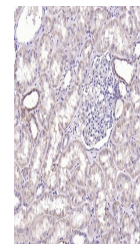
Product Datasheet

CAMK2 alpha (phospho-Thr286) antibody (orb10223)

Description	CAMK2 alpha (phospho-Thr286) antibody
Species/Host	Rabbit
Reactivity	Human, Rat
Conjugation	Unconjugated
Tested Applications	IHC-P
Immunogen	KLH conjugated Synthesised phosphopeptide derived from human CaMK2 alpha around the phosphorylation site of Thr287 (QE(p-T)VD)
Target	Phospho-CaMKII (Thr287)
Preservatives	0.01M TBS(pH7.4) with 1% rAlbumin, 0.03% Proclin300 and 50% Glycerol.
Form/Appearance	Liquid
Concentration	1mg/ml
Storage	Maintain refrigerated at 2-8°C for up to 2 weeks. For long term storage store at -20°C in small aliquots to prevent freeze-thaw cycles.
Note	For research use only
Isotype	IgG
Clonality	Polyclonal
MW	54 kDa
Uniprot ID	Q9UQM7
Dilution Range	IHC-P=1:100-500
Expiration Date	12 months from date of receipt.



IHC-P analysis of rat stomach using CaMK...



IHC-P analysis of Human kidney using CaM...