

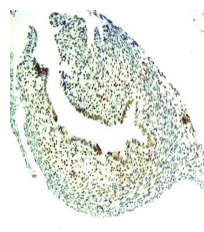
Product Datasheet

BrdU antibody (orb10204)

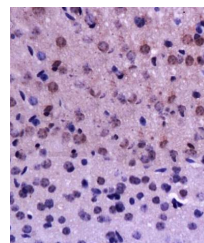
| | |
|----------------------------|--|
| Description | BrdU antibody |
| Species/Host | Rabbit |
| Reactivity | Human |
| Conjugation | Unconjugated |
| Tested Applications | IHC-P |
| Immunogen | KLH conjugated Brdu |
| Target | BrdU(Proliferation Marker) |
| Preservatives | 0.01M TBS(pH7.4) with 1% rAlbumin, 0.03% Proclin300 and 50% Glycerol. |
| Form/Appearance | Liquid |
| Concentration | 1mg/ml |
| Storage | Shipped at 4°C. Store at -20 °C for one year. Avoid repeated freeze/thaw cycles. |
| Note | For research use only |
| Isotype | IgG |
| Clonality | Polyclonal |
| MW | 0.3071 kDa |
| CAS Number | 59-14-3 |
| Dilution Range | IHC-P=1:100-500 |
| Expiration Date | 12 months from date of receipt. |



IHC-P of mice ovarian tissue (BrdU antibody)



Immunohistochemical analysis of paraffin-embedded tissue



Immunohistochemical analysis of formalin-fixed tissue