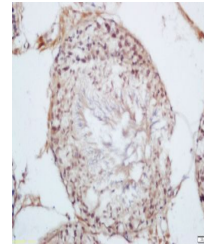


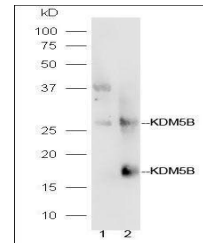
Product Datasheet

KDM5B antibody (orb101871)

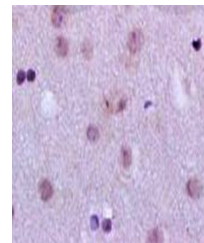
Description	KDM5B antibody
Species/Host	Rabbit
Reactivity	Human, Rat
Conjugation	Unconjugated
Tested Applications	FC, IHC-P
Immunogen	KLH conjugated synthetic peptide derived from human KDM5B/PLU1/Jarid1B (65-165/1544 aa)
Target	KDM5B
Preservatives	0.01M TBS(pH7.4) with 1% rAlbumin, 0.03% Proclin300 and 50% Glycerol.
Form/Appearance	Liquid
Concentration	1mg/ml
Storage	Shipped at 4°C. Store at -20 °C for one year. Avoid repeated freeze/thaw cycles.
Note	For research use only
Isotype	IgG
Clonality	Polyclonal
MW	170 kDa
Uniprot ID	Q9UGL1
Dilution Range	IHC-P=1:100-500, Flow-Cyt=3ug/test, WB=1:500-2000, IHC-F=1:100-500, IF=1:100-500, ELISA=1:5000-10000
Expiration Date	12 months from date of receipt.



Immunohistochemical staining of rat test...



Western blot analysis of mouse testis ly...



Immunohistochemical staining of rat brai...