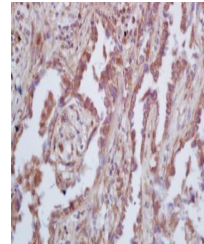


Product Datasheet

GAS 6 antibody (orb101742)

Description	GAS 6 antibody
Species/Host	Rabbit
Reactivity	Human, Mouse
Conjugation	Unconjugated
Tested Applications	ELISA, IF, IHC-Fr, IHC-P, WB
Immunogen	KLH conjugated synthetic peptide derived from human GAS 6 (551-650/721 aa)
Target	GAS 6
Preservatives	0.01M TBS(pH7.4) with 1% rAlbumin, 0.03% Proclin300 and 50% Glycerol.
Form/Appearance	Liquid
Concentration	1mg/ml
Storage	Shipped at 4°C. Store at -20 °C for one year. Avoid repeated freeze/thaw cycles.
Note	For research use only
Isotype	IgG
Clonality	Polyclonal
MW	76 kDa
Uniprot ID	Q61592
Expiration Date	12 months from date of receipt.



Immunohistochemical analysis of formalin...